

SDI OTALEX C. 18 YEARS OF COMMUN WORK; 9 YEARS IN THE WEB

Teresa Batista^{2,10}

Carmen Caballero¹, Fernando Ceballos¹, Júlio Mateus², Cristina Carrico², Pedro Vivas White³, Sara Reis⁴, Marta Durán⁵, David Lagár⁶, Ana Garrido⁷, Joana Patricio⁷, Duarte Carreira⁸, José Cabezas⁹, Luis Fernández⁹, Carlos Pinto-Gomes¹⁰, Paula Mendes¹⁰, Luis Quinta-Nova¹¹, Paulo Fernandez¹¹ and Natália Roque¹¹

- 1 Gobierno de Extremadura, Mérida, Spain.
- 2 Comunidade Intermunicipal do Alentejo Central, Évora, Portugal;
- 3 Centro Nacional de Información Geográfica, Madrid, Spain.
- 4 Direção Geral do Território, Lisboa, Portugal;
- 5 Diputación de Badajoz, Badajoz, Spain;
- 6 Diputación de Cáceres, Cáceres, Spain;
- 7 Comunidade Intermunicipal do Alto Alentejo, Portalegre, Portugal;
- 8 EDIA, Beja, Portugal;
- 9 University of Extremadura, Badajoz, Spain;
- 10 University of Évora, ICAAM, Évora, Portugal;
- 11 Instituto Politécnico de Castelo Branco, Castelo Branco, Portugal.

Lisbon, 26th May 2015

Contents

- INTRODUCTION – OTALEX C AREA and BACKGROUND PROJECTS
- SDI-OTALEX (www.ideotalex.eu)
 - DEVELOPMENT
 - EVOLUTION
 - INOVATION
- REMARKS AND OUTCOMES

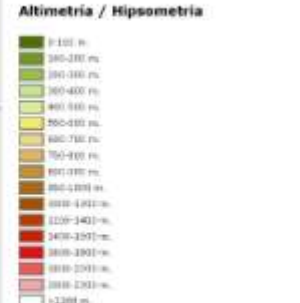
INTRODUCTION



Population (inhabit./km2)

- very low populated regions
- Alentejo - 18,5
- Extremadura - 26,5
- Centro - 75,3
- UE27 - 115,9
- 6% of Iberia Peninsula Population
- Area
- 92.532 km2
- 16% of Iberia

Unique territory – UNESCO world heritage – Évora and Mérida





Nature Conservation

- Protected areas**
- 16% of the territory
 - 32% of forest area





Superficial Water

Alqueva Dam/lake – crossborder Spain and Portugal
Biggest artificial lake in Europe – 250 km²; 120.000 ha of irrigation



Background Projects and Partners

COORDSIG	PLANEXAL	GEOALEX	OTALEX	OTALEX II	OTALEX C
1997-2000	2002-04	2004-06	2006-08	2009-11	2011-15
IPCC AMDE JE MMA GA	AMDE JE	IGP AMDE JE IGN CCDRA AMNA DB GRCE	IGP AMDE JE IGN CCDRA AMNA DB GRCE UEX UÉvora EDIA	IGP CIMAC JE IGN CCDRA CIMAA DB GRCE UEX UÉvora EDIA	DGT CIMAC JE IGN CCDRA CIMAA DB UEX Uévora EDIA Dip Cáceres IPCB

CIMAC=AMDE
CIMAA=AMNA
DGT=IGP=IPCC

Objectives

- To **study and show** the reality of the cross border regions of Alentejo and Centro in Portugal and Extremadura in Spain: Landscape, environment, resources, people, economy, culture, heritage.
- To **share geographic information** between the Spanish-Portuguese border trough **SDI OTALEX**
- To promote the **sustainable development** of the territory and the **quality of life** of the population
- To **articulate cross border politics** and development strategies
- To promote the **continuity of the partnership**



OTALEX C Project Partners - 11

National geographical institutes

- Partnership

Regional authorities

enterprise

High education

Local government

- Cofinanced by:

The SDI-OTALEX

SDI's are distributed systems, open and collaborative, composed by services directed to the community.



SDI's permits that anyone with Internet and with a simple navigator can access and analyze spatial information from remote sources

www.ideotalex.eu

SDI-OTALEX conceptual model

- system interoperability,
- *opensource technologies,*
- modular architecture,
- standards based,
- multilingual
- According to Inspire Directive (March 2007)









Español | Português | English



Portugal Espanha
Cooperação Transfronteiriça
INTERREG III A
Cooperação Transfronteiriça
Espanha-Portugal

Presentación | Documentación | Socio | Legislación | Contacto | Mapa | Ayuda



Portugal Espanha
Cooperação Transfronteiriça
INTERREG III A
Cooperação Transfronteiriça
Espanha-Portugal

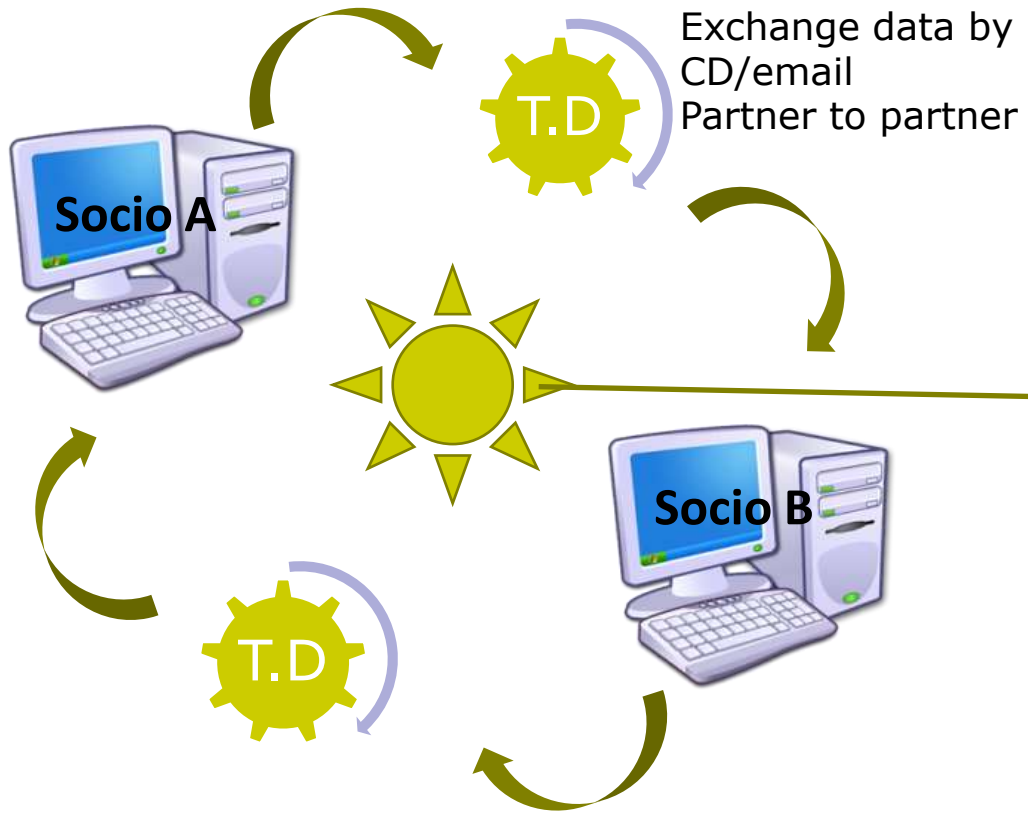
Apresentação | Documentação | Socio | Legislação | Contacto | Mapa | Ajuda



Portugal Espanha
Cooperação Transfronteiriça
INTERREG III A
Cooperação Transfronteiriça
Espanha-Portugal

Presentation | Documentation | Partners | Legislation | Contact | Map | Help

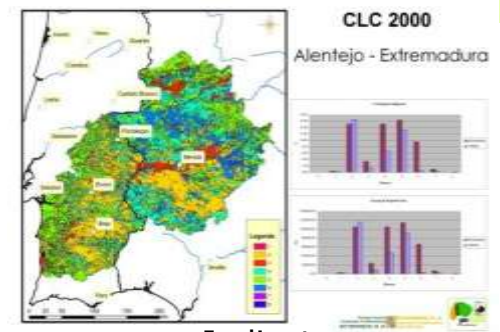
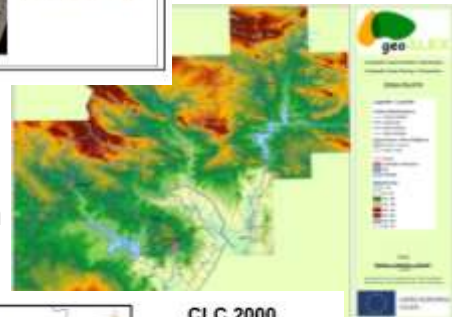
Historic overview: COORDSIG-GEOALEX (1997-2006)



OBJETO / FENÓMENO		ATRIBUTO
PORTUGUÉS	CASTELLANO	CLASIFICACION REPRESENTACION/OTRO APLIC.
DEFINICION / DEFINICION		
PORTUGUÉS	CASTELLANO	
DESCRIPCION DE OBJETO/FENOMENO CON SU UBICACION PARA LA PRACTICA DE MANEJO	DESCRIPCION DE OBJETO/FENOMENO CON SU UBICACION PARA LA PRACTICA DE MANEJO	

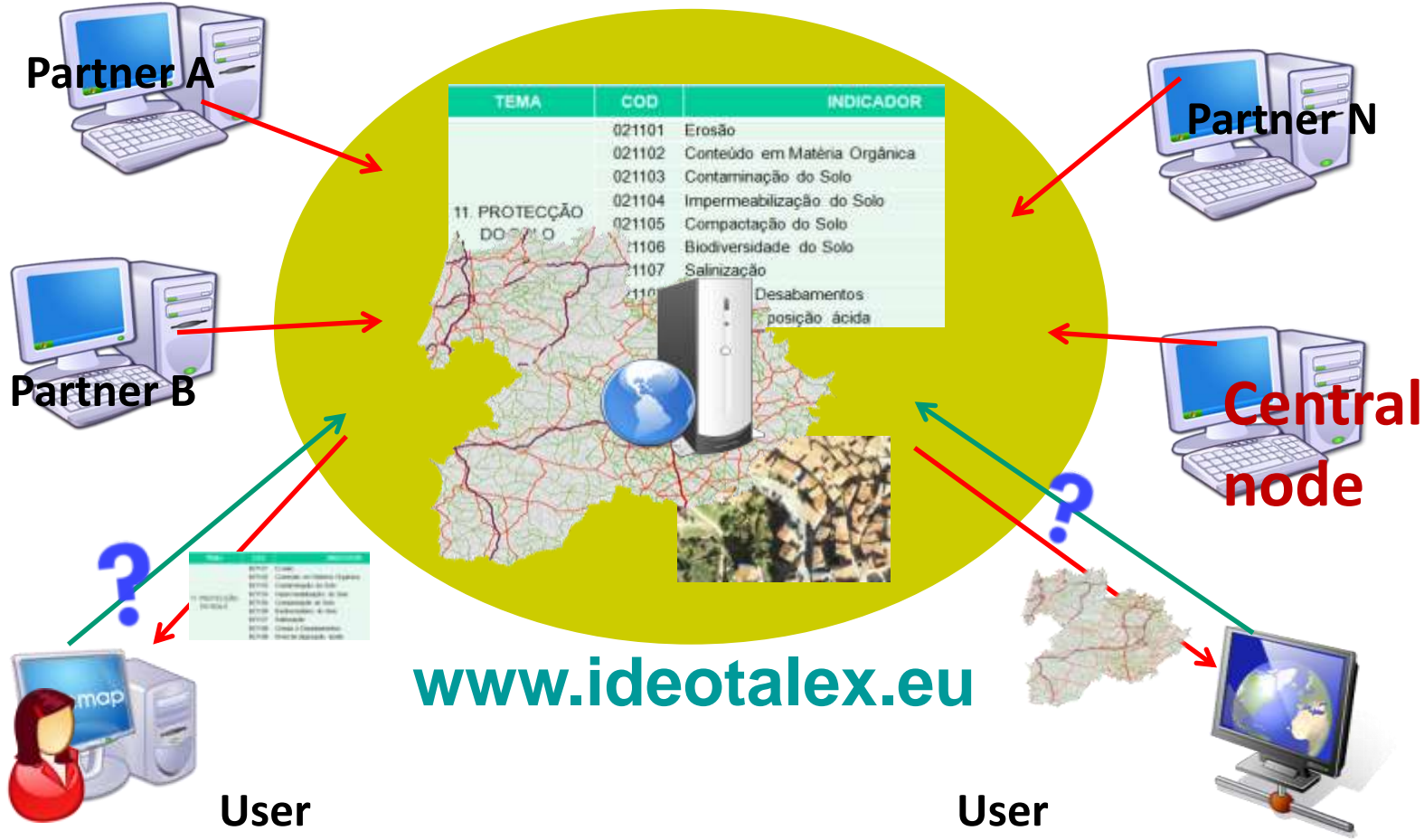
Common Cartography Object catalog

Data harmonization

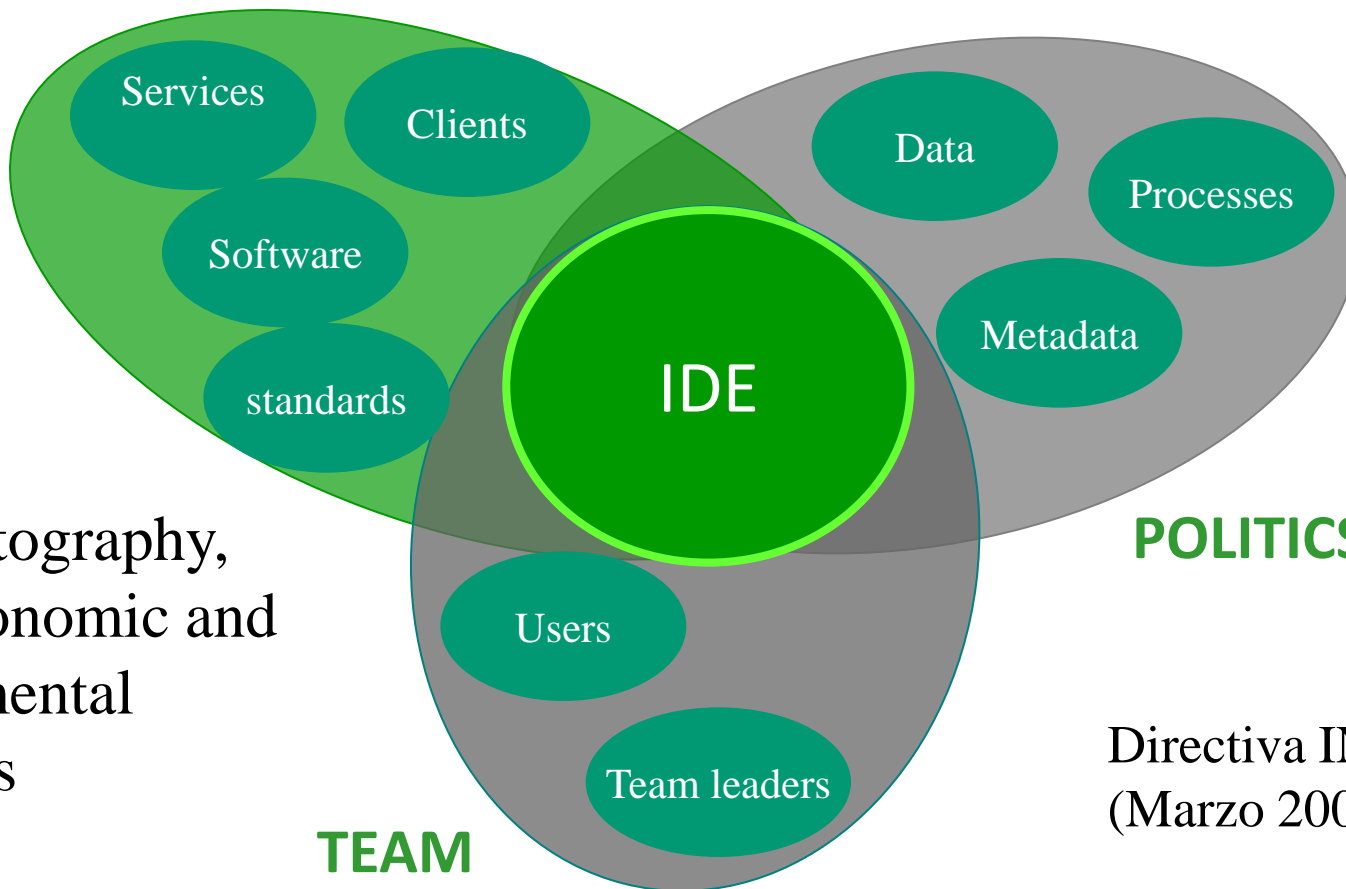


Indicators harmonization

SDI-OTALEX structure: OTALEX-OTALEX C (2006-2015)



TECNOLOGY



basic cartography,
socio-economic and
environmental
indicators

POLITICS

Directiva INSPIRE
(Marzo 2007)



Development

- 2006. Proposal of SDI OTALEX in the OTALEX Project (first crossborder SDI non pilot). Directiva INSPIRE (March 2007)
- 2006 agreements:
 - Services (Data Viewer, metadata and names search)
 - Basic Information (main hydrographic network, main roads and rails, cities with more than 10.000 inhabitants)
 - White book of SDI OTALEX (data model design, SDI OTALEX design, requirements and attributes)
- 2007 SDI-OTALEX in production

Evolution



basic cartography,
socio-economic
and environmental
indicators

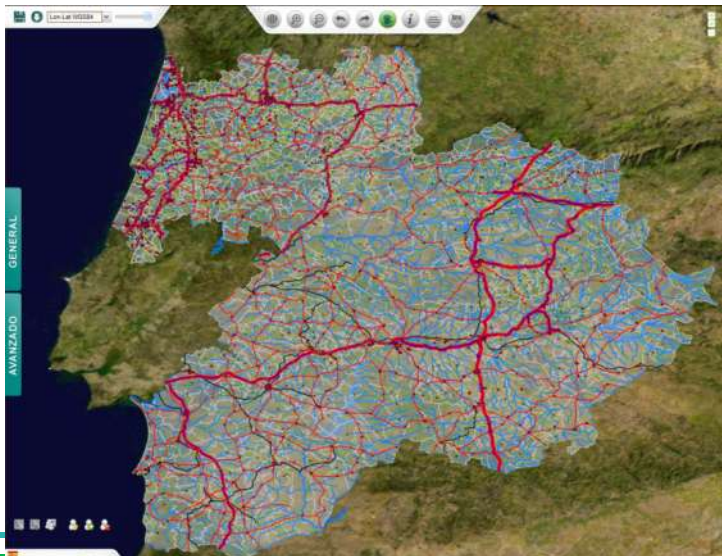


**Geoportál Homepage
evolution 2007-2015**

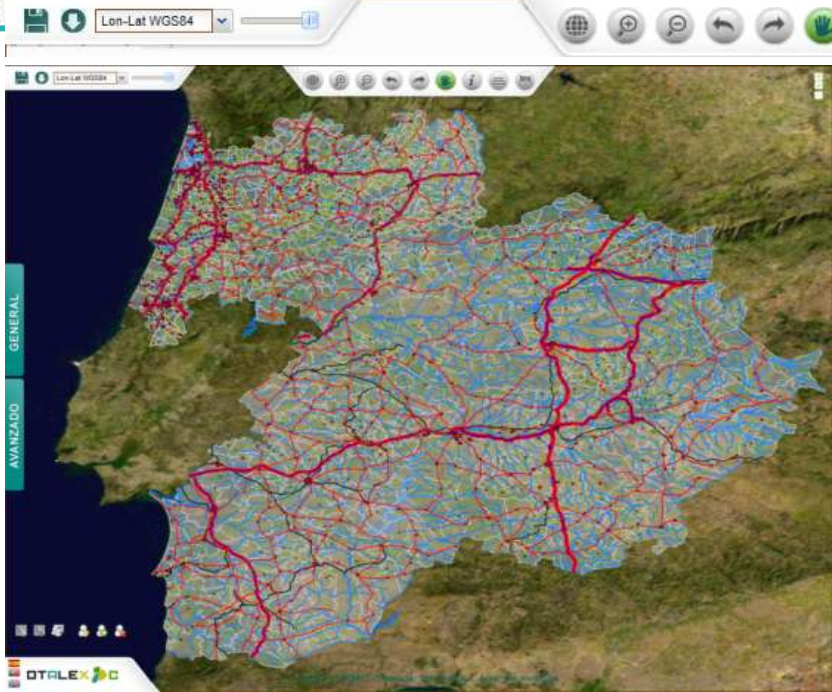
Map Viewer

Evolution

Remote administration



Evolution



Tools:

1. Navigation
2. Identification of features
3. Measures
4. Impression
5. Add, remove services or layers
6. Upload and download of layers
7. Legend
8. User registration
9. Add local files
10. Geoprocessing
11. Transparency
12. Drawing
13. Search for WFS
14. Indicators
15. Client SOS
16. SDI mobile



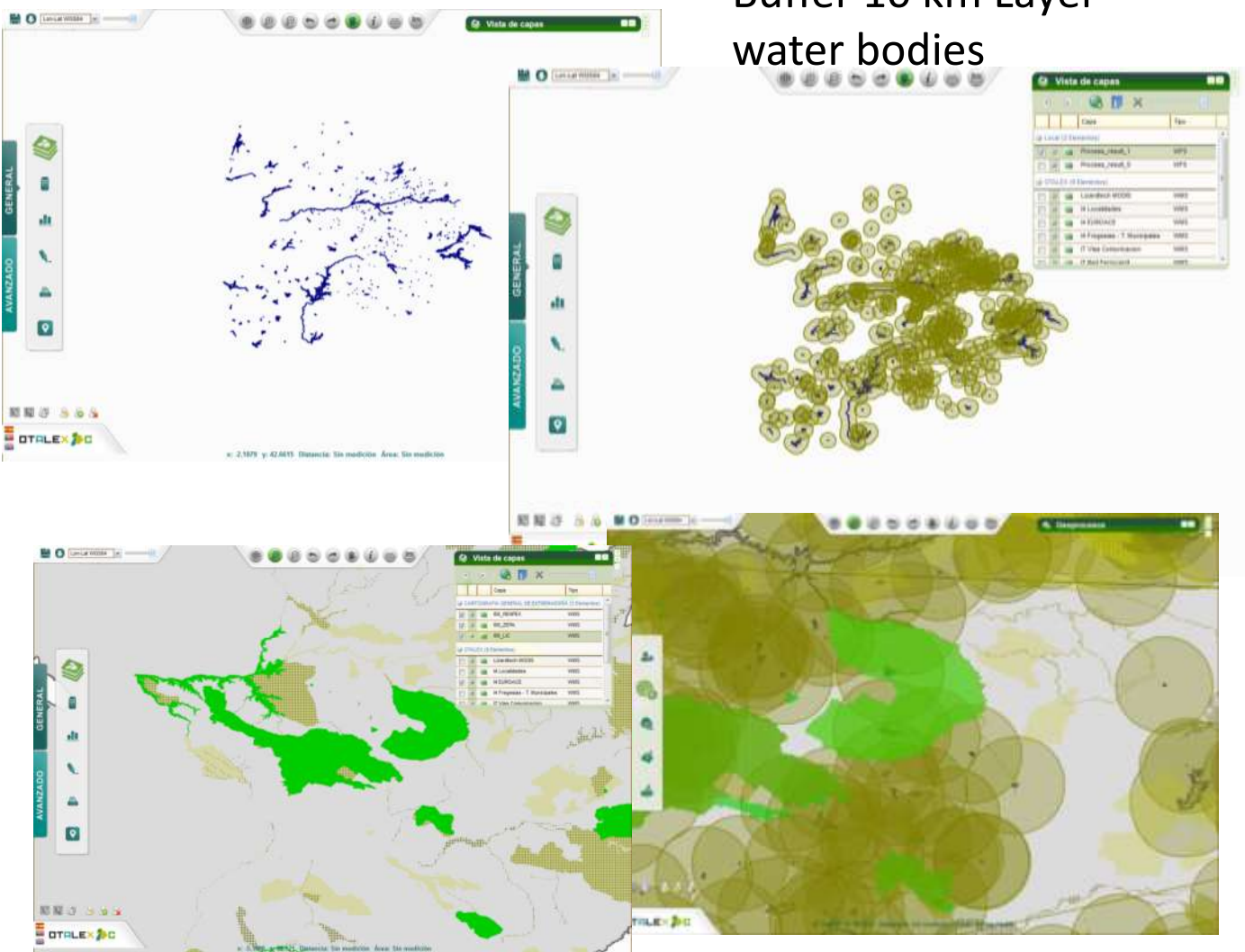
Funcionalities

INOVATION IN OTALEXC

- Remote Data Administration
- WPS (WEB PROCESSING SERVICES)
- Working with local/remote layers
- Identify tool in remote layers
- Social and cultural indicators
- Draw tool
- SOS (Sensor Observation Services)
- Indicator System – SIOTALEX
- Linked data

Buffer 10 km Layer water bodies

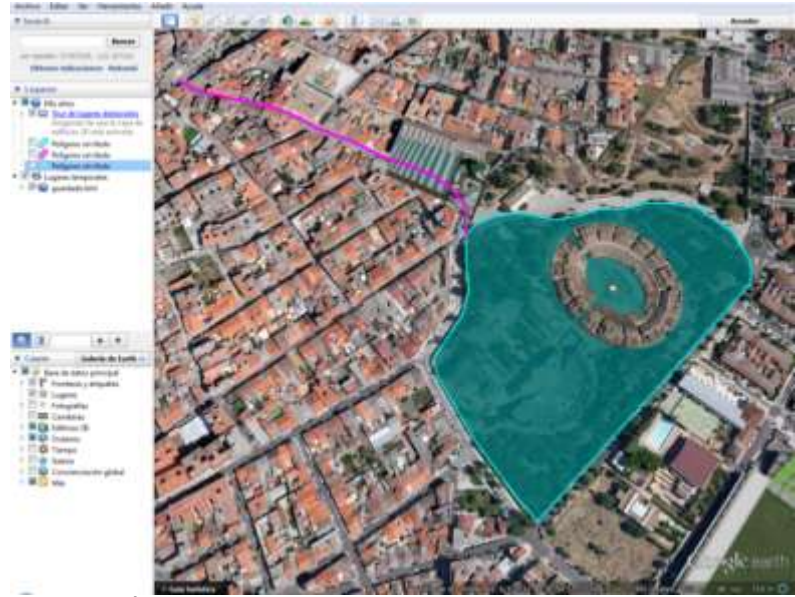
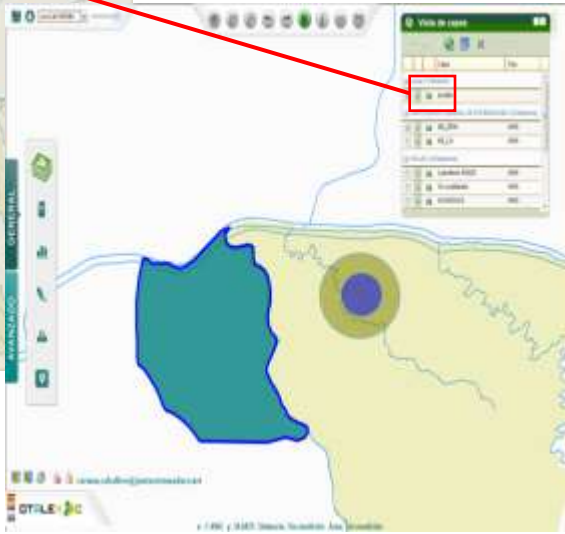
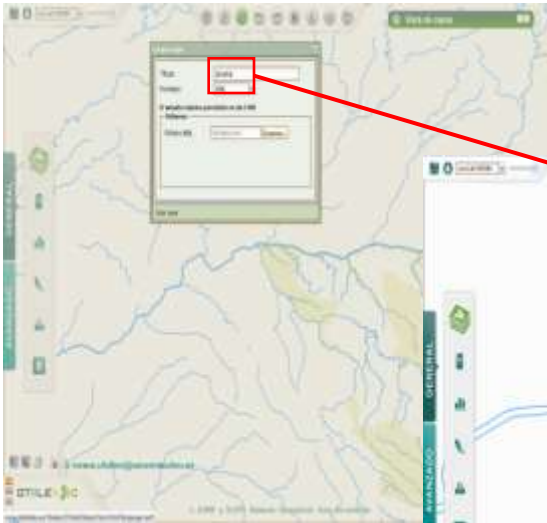
WPS tools



- Calculation of the number of bands of the layer which receives as input Raster;
- Calculation of the maximum and minimum value of the raster band;
- Multipart to Singlepart operations;
- Buffering;
- Indication if a layer WFS is in contact with another WFS layer;
- Maps Intersection operations;
- Calculation of the maximum and minimum value of raster map;
- Symmetric difference of two vector maps;
- Conversion of GML layer to shape format;
- Polygons generalization;
- Vector maps combination;
- Maps bonding;
- Distance between two maps;
- Mathematical operations of: Cross, disjoint, contains, equal, within, contact and superimposed.

Add local data

Drawing and Geoprocessing tools



Palacio de Congresos y Exposiciones de Mérida, 4 de junio de 2013 / 4 de junho de 2013

Español | Português | English

OTALEX C
Observatório Territorial e Ambiental ALENTEJO Extremadura Centro
Observatorio Territorial y Ambiental ALENTEJO Extremadura Centro

UE FEDER
Iniciamos en su futuro
Iniciamos su futuro

COORDINACIÓN TERRITORIAL ESPAÑA - PORTUGAL
COORDINACÃO TERRITORIAL

Presentación | Publicacions | Partners | Legislation | Contact | Map | Help

Bienvenido/a a la Infraestructura de Datos Espaciales del Observatorio Territorial para el ALENTEJO y Extremadura.

Proyectos

- OTALEX I
- OTALEX II
- OTALEX C

GEOPORTAL

Metadata Catalogue | Map viewer | Nomenclator (Gazetteer) | Publications

Indicator System | Semantic Search | Semantic Viewer

www.ideotalex.eu

“Best Practices Inform of the INTERREG IIIA Program Spain-Portugal, 2000-2006” - OTALEX – reference project in **Best Practices** of Exe 1 -Infrastructures, planning and development of trans border rural territory.

ANÁLISIS DE LOS PROYECTOS INCLUIDOS EN EL PROGRAMA INTERREG III-A DE COOPERACIÓN TRANSFRONTERIZERA ESPAÑA-PORTUGAL 2000-2006 Y PREPARACIÓN DE UN DOCUMENTO DE DIVULGACIÓN

Informe de Buenas Prácticas



Programa Operativo Regional INTERREG III-A

10 de 2007

Honor mention of the European SDI Best Practices Award 2009 – eSDInet+ project



OTALEX is member of the CODIIGE – Consejo Directivo of SDI of Spain

Conclusions and outcomes

- The partnership is committed in continue the work by promoting the use and usability of SDI-OTALEX;
- By maintaining updated the indicator system and the cartographic information
- To continue the improvement of SDI-OTALEX, specially the indication system trough the implementation of Annexe III of INSPIRE
- To study also climate change indicators and extreme events alerts, in order to help civil protection and security in climate change adaptation

Thank You for your attention!

www.ideotalex.eu

Teresa Batista tbatista@cimac.pt
CIMAC and ICAAM – University of Évora

Carmen Caballero carmen.caballero@gobex.es
 Fernando Ceballos fernando.ceballos@gobex.es
Gobierno de Extremadura